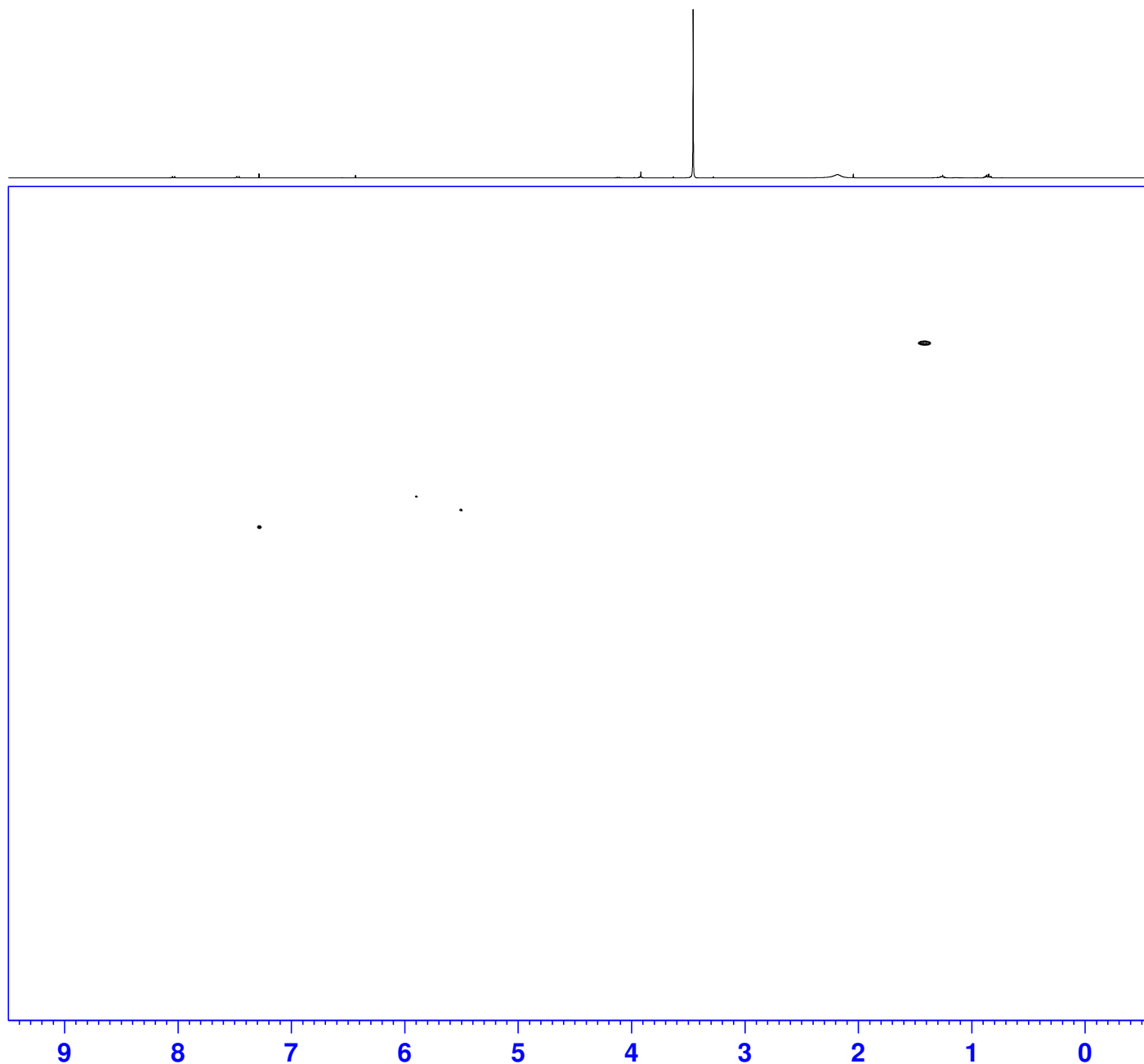


ZP_HMQCGP_3h CDC13 {C:\Bruker\TopSpin3.6.0} AMP 15



Current Data Parameters
NAME CCY_72_04
EXPNO 13
PROCNO 1



F2 - Acquisition Parameters
Date_ 20220914
Time 7.15 h
INSTRUM spect
PROBHD Z108618_1022 (
PULPROG hmqcgpgf
TD 1152
SOLVENT CDC13
NS 12
DS 16
SWH 4032.258 Hz
FIDRES 7.000448 Hz
AQ 0.1428480 sec
RG 198.49
DW 124.000 usec
DE 6.50 usec
TE 298.2 K
CNST2 145.0000000
D0 0.00000300 sec
D1 1.50000000 sec
D2 0.00344828 sec
D12 0.00002000 sec
D13 0.00000400 sec
D16 0.00020000 sec
IN0 0.00001990 sec
TDav 1
SFO1 400.1317832 MHz
NUC1 1H
P1 14.00 usec
P2 28.00 usec
PLW1 14.03100014 W
SFO2 100.6228298 MHz
NUC2 13C
CPDPRG[2] garp
P3 10.00 usec
PCPD2 80.00 usec
PLW2 60.64099884 W
PLW12 0.94751000 W
GPNAM[1] SMSQ10.100
GPZ1 50.00 %
GPNAM[2] SMSQ10.100
GPZ2 30.00 %
GPNAM[3] SMSQ10.100
GPZ3 40.10 %
P16 1000.00 usec

F1 - Acquisition parameters
TD 256
SFO1 100.6228 MHz
FIDRES 196.293976 Hz
SW 249.701 ppm
FnMODE QF

F2 - Processing parameters
SI 1024
SF 400.1300000 MHz
WDW QSINE
SSB 2
LB 0 Hz
GB 0
PC 1.40

F1 - Processing parameters
SI 1024
MC2 QF
SF 100.6127685 MHz
WDW QSINE
SSB 2
LB 0 Hz
GB 0